

Upgrade Guidance for HD Cameras

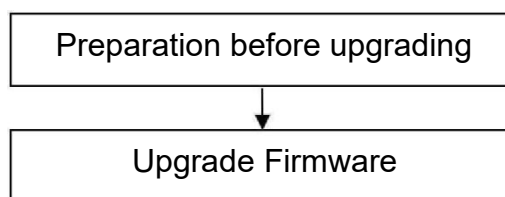
This firmware is for HD cameras C1 V3, C1 Lite V3, FI9800P V3, FI9803P V4, FI9821P V3, FI9821EP V2, FI9816P V3, FI9853EP V2, FI9851P V3, FI9800XE V2, FI9800W V2, FI9800E V2, FI9831P V3, FI9826P V3. Please check your camera model on the bottom sticker.

Updating with the wrong firmware could severely damage and/or break your camera. Please make sure the firmware is correct.

Note:

System firmware System firmware 1.12.5.3/1.12.5.4, App firmware 2.x.2.8, 2.x.2.14, 2.x.2.21, 2.x.2.22, 2.x.2.26, 2.x.2.29, 2.x.2.30, 2.x.2.33 can upgrade to this version.

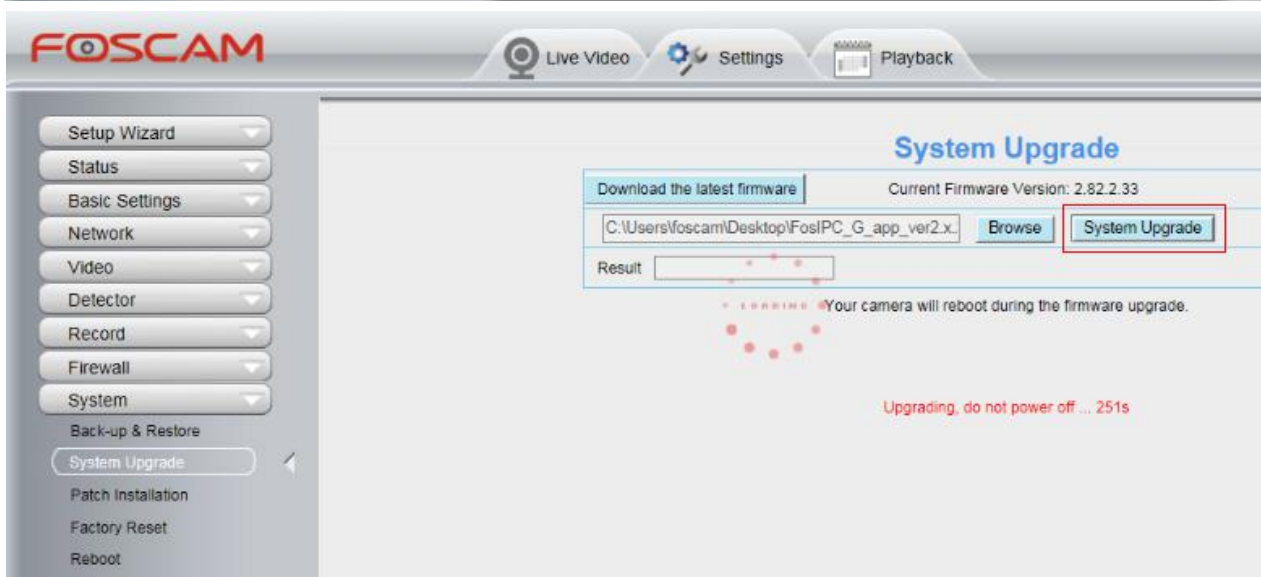
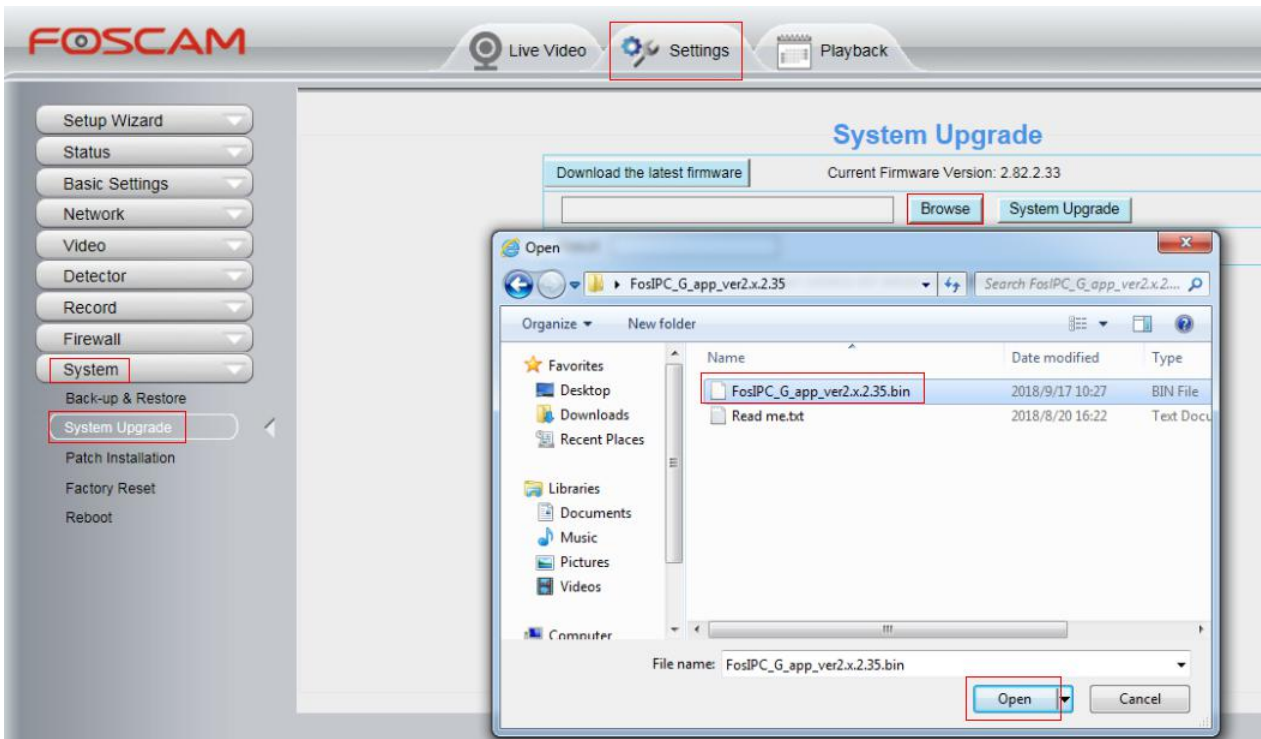
If camera upgraded to this firmware, it cannot be downgraded to previous firmware versions.



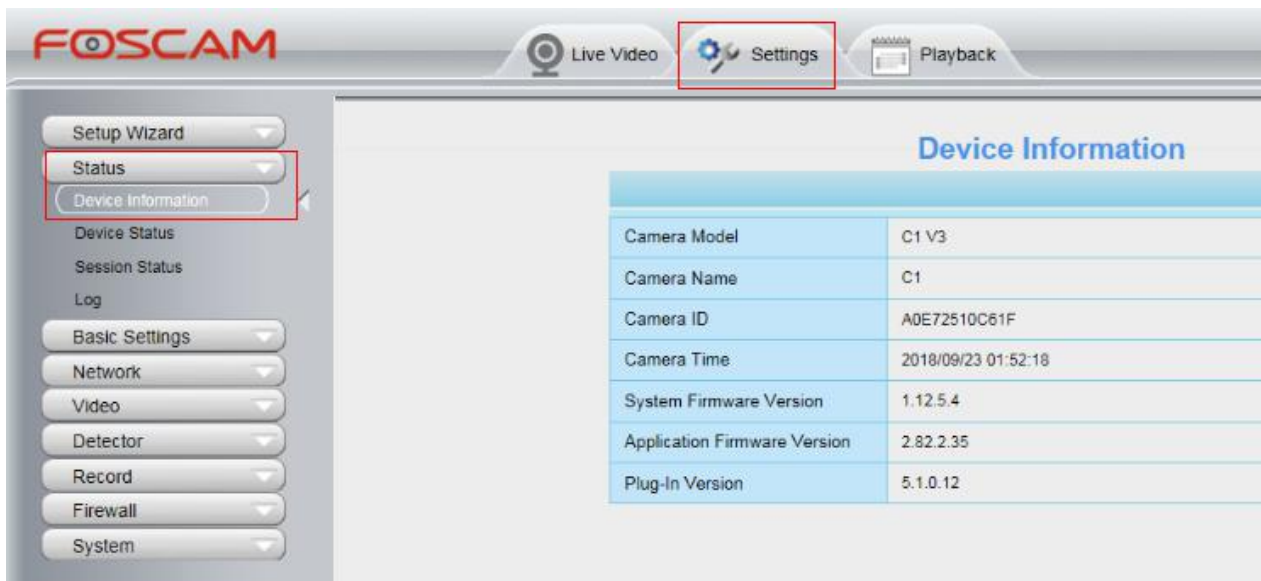
Preparation before upgrading:

1. Please restart your camera before the upgrading;
2. Connect camera to router with an Ethernet cable before upgrading;
3. DO NOT upgrade firmware via wireless;
4. DO NOT upgrade firmware over internet, just finish it in LAN;
5. Keep power on during the upgrading;
6. Logging your camera as administrator first, upgrade firmware on web page.
7. Suggest to unplug SD card before upgrade.

Step 1 : Login your camera, go to **Settings-->System-->System Upgrade**. Click Browse/Choose File, find the file **FosIPC_G_app_ver2.x.2.35.bin** you've extracted in your local hard driver, then click **Open**. Camera will upgrade after you click on **System Upgrade**.



Step 2: Login again to check the **System Firmware Version, Application Firmware Version** and **Plug-In Version**.



Note:

You'd better re-install the plug-in if it did not upgraded;

Congratulations, your camera successfully upgraded to the latest firmware!

End

--- By Foscam Technical Support Team